

# WH-8

## CNC 2POINT COILING MACHINE

Very cost effective & user-friendly CNC 2-point coiling machine  
originally-intended to replace mechanical coiling machines

MNO (Mec New Operation) control system gives advanced operability, gaging and  
production control with multi-function.

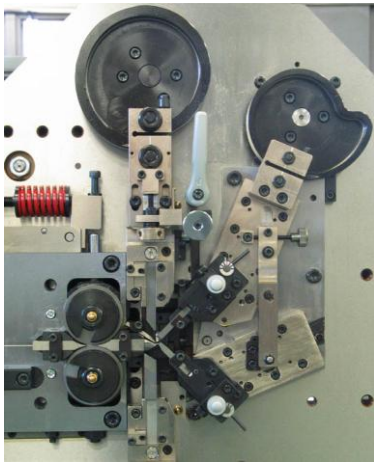


### ORII & MEC CORPORATION

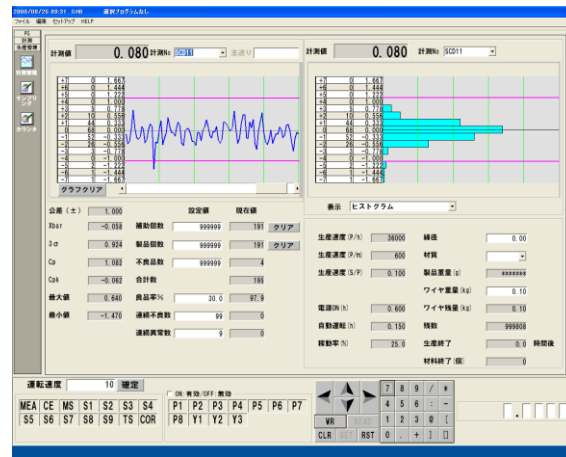
1-17-24 Kamiaoki-Nishi Kawaguchi-shi Saitama 333-0845 Japan  
TEL: (81) 48-256-3511 FAX: (81) 48-256-3595  
<http://www.oriimec.co.jp/> e-mail: [info-spring@oriimec.co.jp](mailto:info-spring@oriimec.co.jp)

**Features**

- 5-Axis for Feed, Cut, Wedge Pitch, Push Pitch, & Point equipped as standard spec.
- Simple mechanisms for user-friendliness, and Rib cam as driving cam for high speed production
- Not space-consuming for the control system equipped on the mechanism trestle – same space as mechanical coiling machine
- For general spring parts like cylindrical springs and conical springs, dimensional data input on to the pattern program will be converted to produce desired parts accordingly. For variation of conical springs, straight, bowl and such shape can be formed adjusting in multi-step up to 100-step, and desired load can be achieved.
- Program display controlled by “MNO” is easy-to-read, i.e. program flow, each axis operation status, input/output, jump and so on can be grasped by scrolling.
- Contact type sensor and Non-contact type capacitance sensor are available. With Auto-collection and Multi-functional production management system gives easy-to-control production.
- Left wind unit, Initial tension servo, 1-point unit and Slip sensor are available as option.

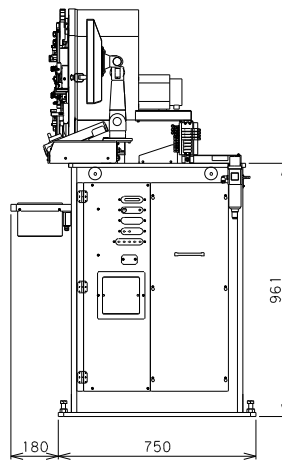
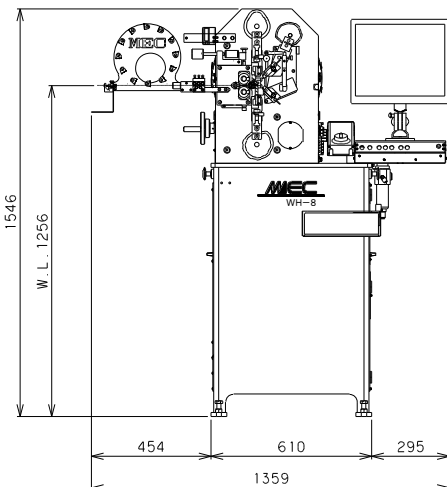


2-point area  
Simplification & User-friendly



Screen for Production Control  
Graphs and data come on screen in real time

**Specifications**



<b>Standard Spec</b>	Wire Dia.	0.2~0.8mm
	Outside Dia.	28mm or more
	D/d Index	4 or more
<b>Feed Axis</b>	Resolution	0.001mm
	Max.Speed	118 m/min
<b>Cut Axis</b>	Resolution	0.001°
<b>Wedge/Pitch Axis</b>	Resolution	0.001mm
<b>Push/Pitch Axis</b>	Resolution	0.001mm
<b>Point Axis</b>	Resolution	0.001mm
<b>Solenoid Valves</b>		4 pcs (8 pcs at Max)
<b>Service Air Pressure</b>		Max 0.5 MPa
<b>Power Source</b>		3-phase AC 200V, 16A
<b>Net Weight</b>		400kg
<b>Control Device</b>		OS Windows XP Max.9-Axis controllable
<b>Display</b>		17" TFT color LCD
<b>External memory</b>		USB Thumb drive
<b>Service Temperature</b>		0~40 deg. C

Specifications are subject to change without notice.